



PACL-300[®] Automatic Capsule Loader Calibration Manual



We don't just sell machines—
we provide service.

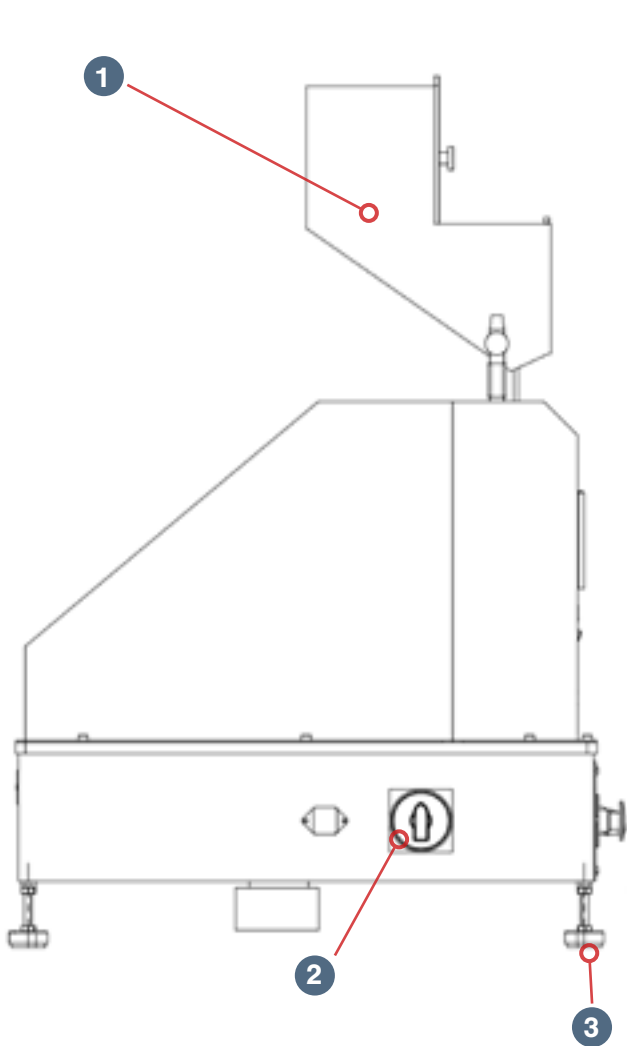
Copyright Notice

© LFA Machines Oxford Limited, published in 2024 by LFA Machines Oxford Limited 2024. Registered in England and Wales, company number 08428898, registered office for service Demar House 14 Church Road East Wittering, Chichester, West Sussex, PO20 8PS.

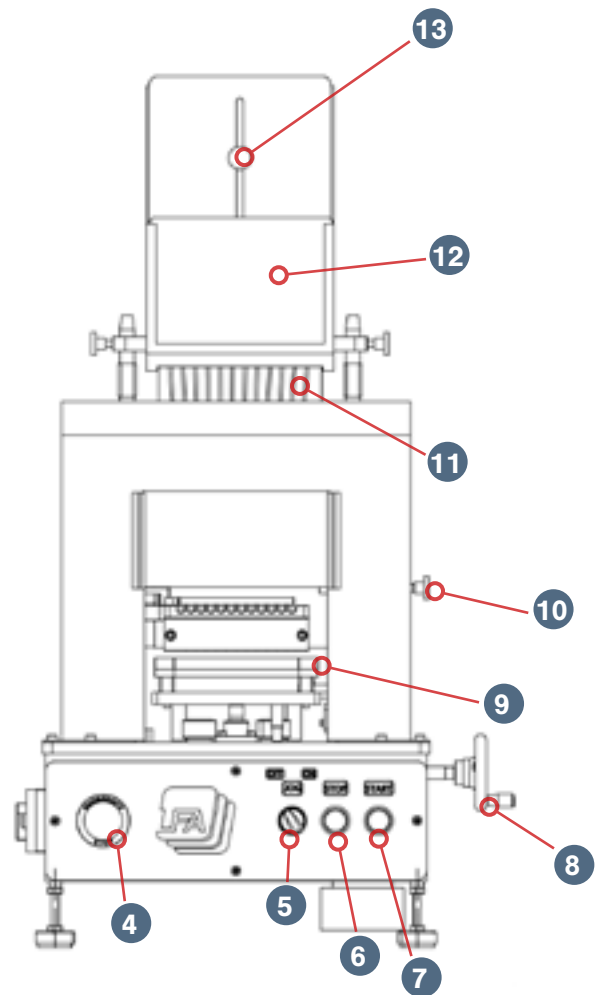
All rights reserved. No part of this publication may be reproduced or transmitted, in any form or by any means, or stored in any retrieval system of any nature, without prior permission, except for fair dealing under the Copyright, Designs and Patents Act 1988, or in accordance with the terms of license issued by the Copyright Licensing Agency in respect of photocopying and/or reprographic reproduction. Application for permission for other use of the copyright material including permission to reproduce extracts in other published works shall be made to the publisher. Full acknowledgment of author, publisher and source must be given.

All trade marks are acknowledged and are owned by their respective owners.

PACL-300[®] Parts List



- 1. Hopper
- 2. Power Switch
- 3. Anti-Vibration Feet
- 4. Emergency Stop
- 5. Jog Switch
- 6. Stop Button
- 7. Start Button



- 8. Hand Wheel
- 9. Capsule Tray Base Plate
- 10. Capsule Gate Arm
- 11. Magazine
- 12. Hopper Cover
- 13. Hopper Gate

Calibration Instructions

Tools and Materials Needed

Before you calibrate the PACL-300[®] Automatic Capsule Loader, it is best to have the following tools and materials on hand for general operation and maintenance:

- Set of metric Allen keys with ball ends
- Set of metric wrenches
- Set of screwdrivers

This guide gives instructions on how to install a tooling kit and how to calibrate the automatic capsule loader.

1. Remove the covers from the PACL-300 with an #5 Allen key.



Fig-1.1
PACL-300



Fig-1.2
#5 Allen key used to
remove the cover



Fig-1.3
PACL-300 without cover

2. Insert the handwheel in the back of the PACL-300.

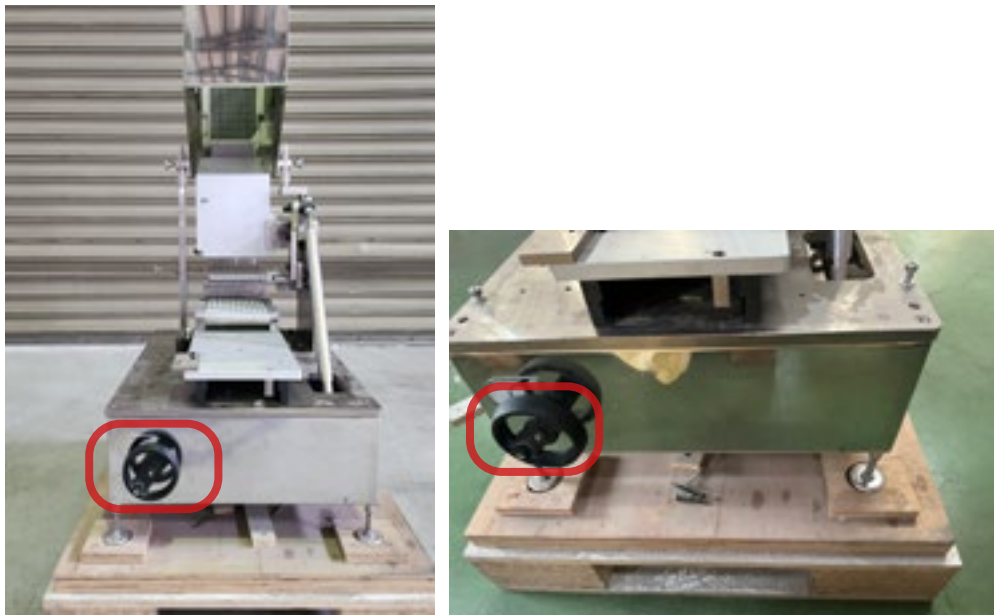


Fig-2
Handwheel insertion
location

3. Rotate the handwheel clockwise until the drive link L1 is parallel to L2.

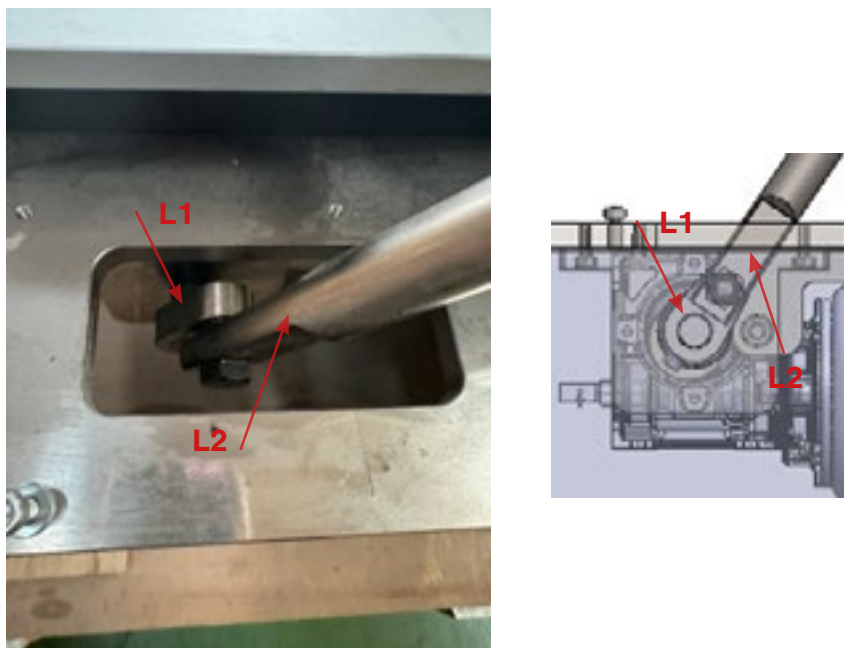


Fig-3
Drive link adjustment
position

4. Remove the capsule platform. Check the gap between the plate and the magazine's slider block. The capsule magazine should be at the lowest position.

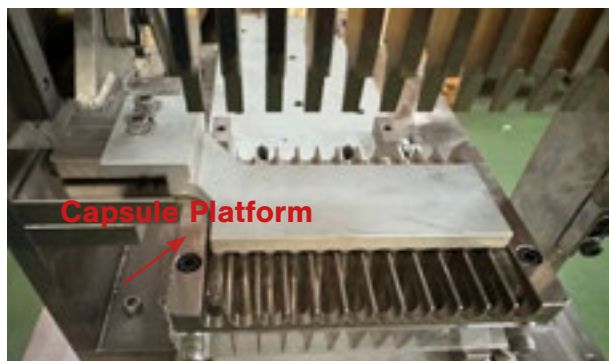


Fig-4.1
PACL-300 Capsule
Platform

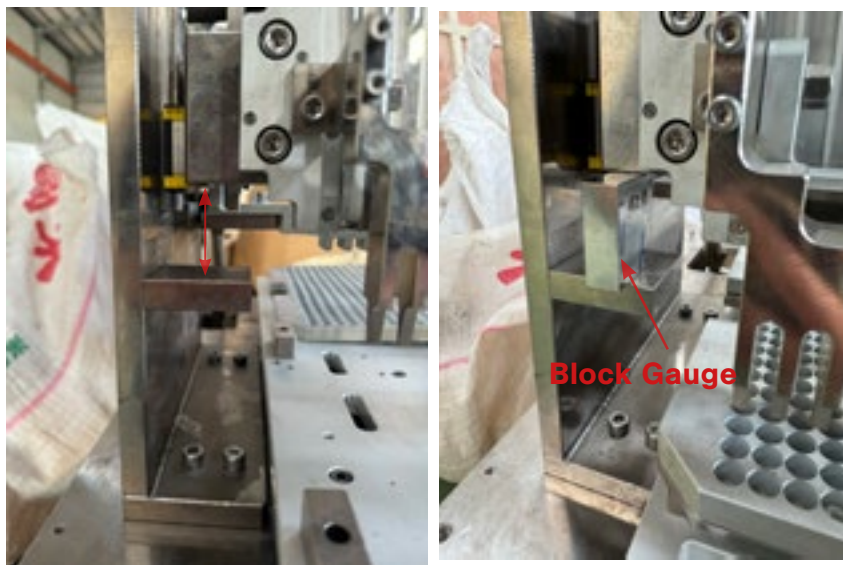


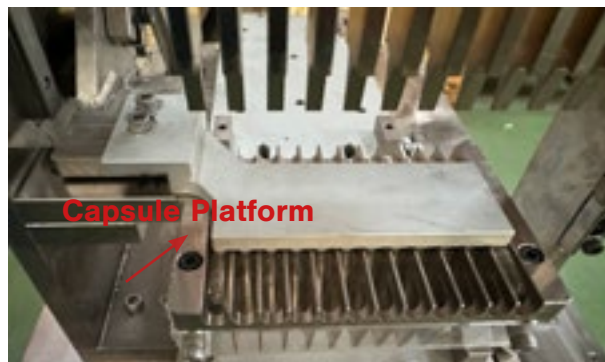
Fig-4.2
Check the gap with the
block gauge.

5. Adjust the nuts with a wrench if the block gauge does not fit the gap.



Fig-5
Adjust the nuts until the block gauge fits in the gap.

6. Re-install the capsule platform.



7. Rotate the handwheel clockwise until the drive link L1 is parallel to L2. This makes the magazine raise to the highest position.

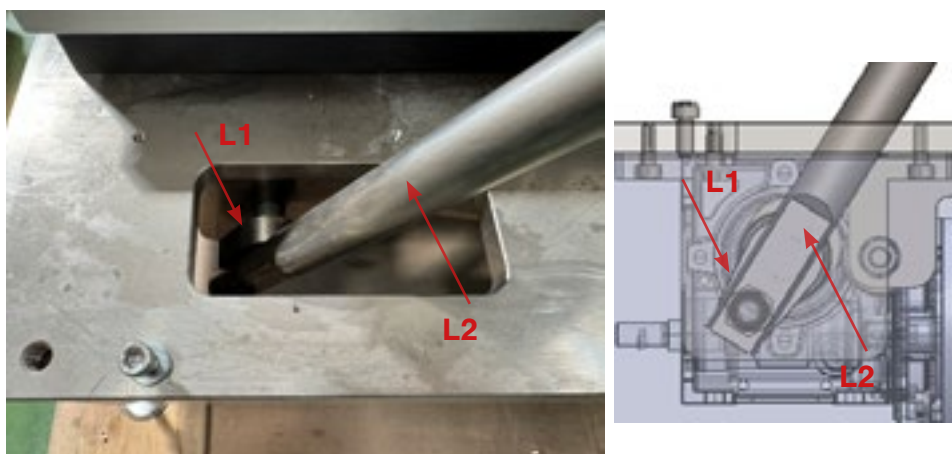


Fig-7

Adjust the drive link until the magazine is at the highest position.

8. Secure the capsule rectifying plate link in the front. Calibrate the plate location by inserting a few capsules. Make sure that the middle of the capsule aligns to the mark.

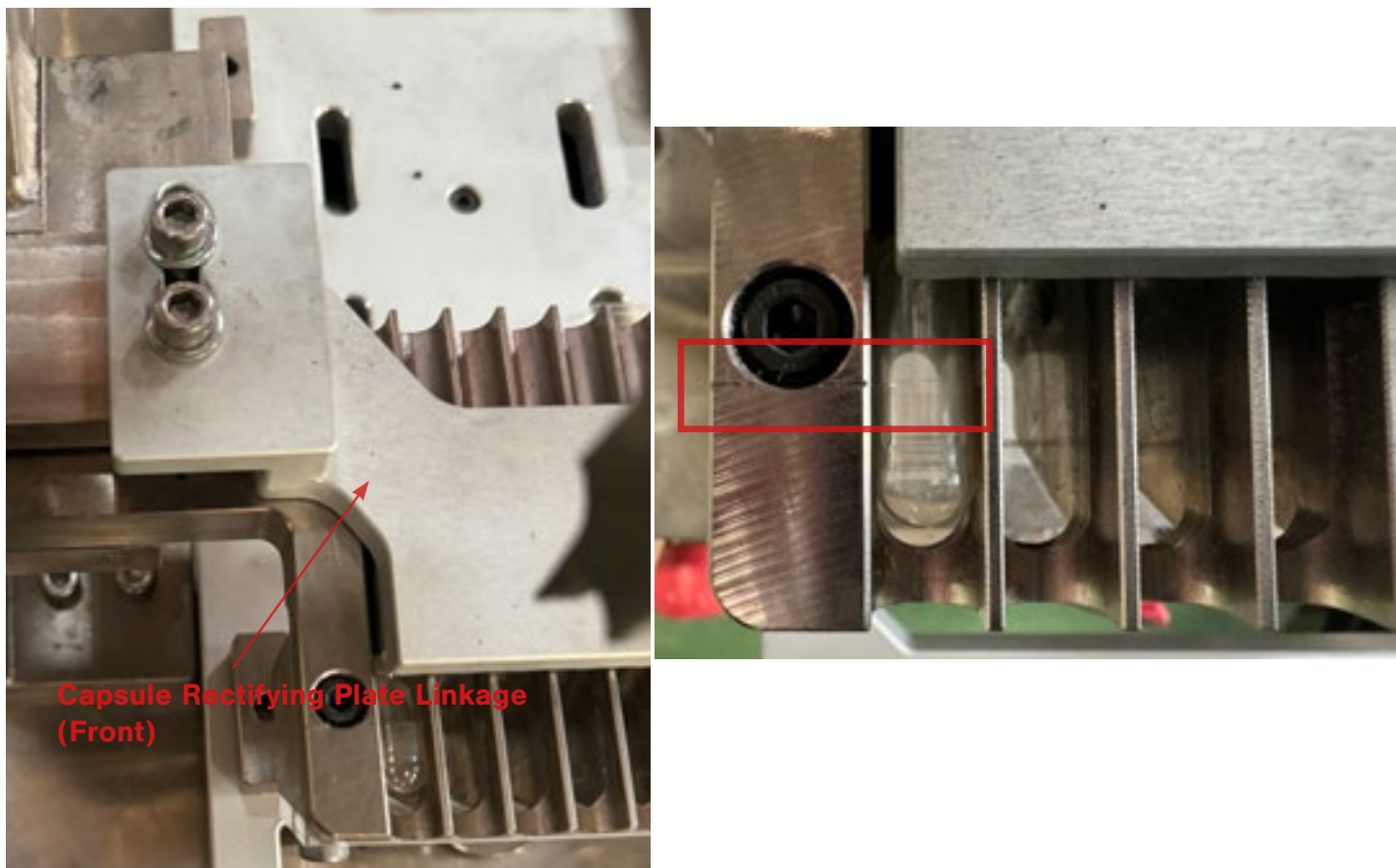


Fig-8
Adjust the capsule ejection timing.

9. Remove the handwheel from the back of the machine. Insert the handwheel on the right side of the machine.



Fig-9
Insert the handwheel on the machine's right side.

10. Rotate the handwheel counterclockwise until the capsule tray base plate is in its furthest position.



Fig-10

Rotate the handwheel to change the capsule tray base plate position.

11. Insert the cup plate and feeding tray.

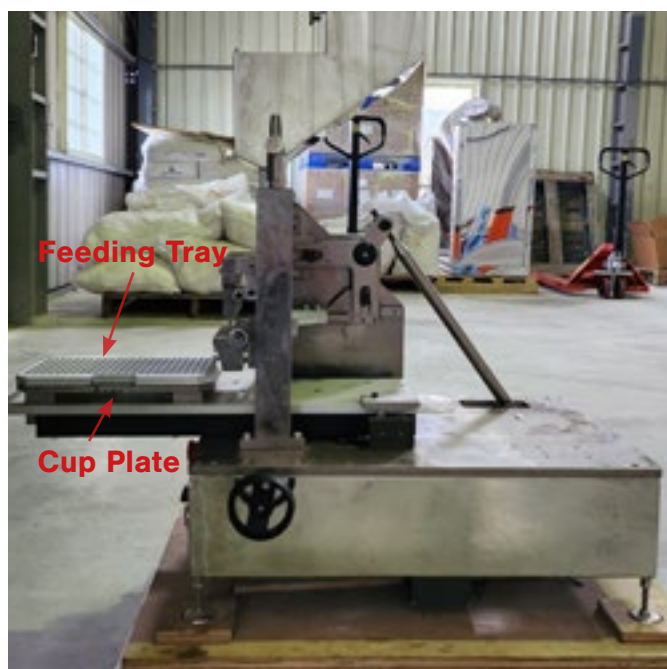


Fig-11

Insert the cup plate and feeding tray.

12. Move the capsule tray base, cup plate, and feeding tray to the lowest position.

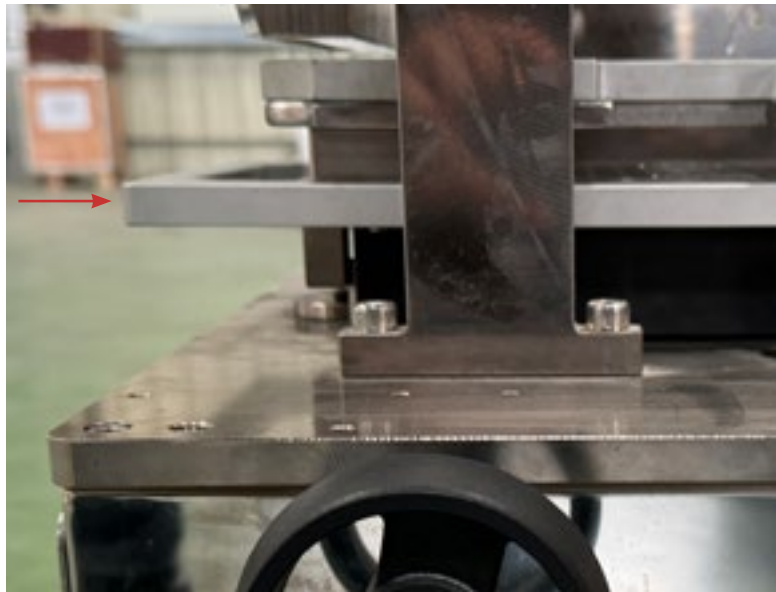


Fig-12
Move the capsule tray base.

13. Manually fill the magazine with capsules (about 3 to 4 rows).

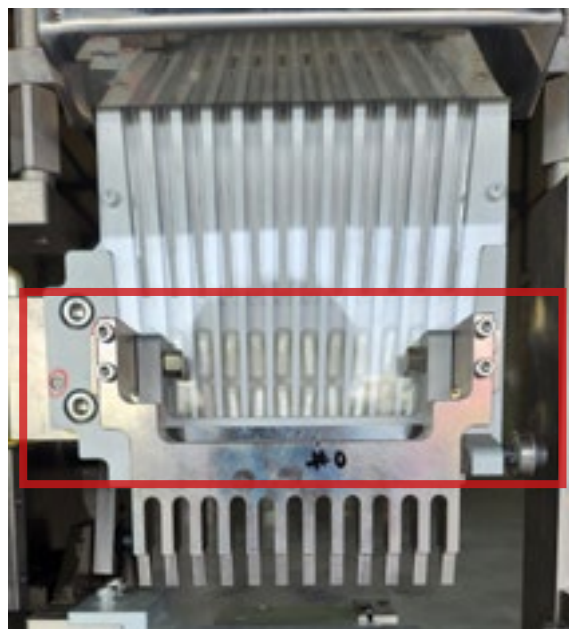


Fig-13
Fill magazine with capsules by hand.

14. Rotate the handwheel clockwise.



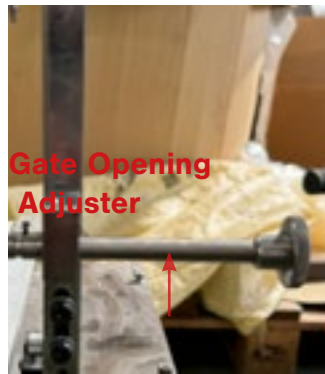
Fig-14
Rotate the handwheel clockwise.

15. Switch the jog button to ON.



Fig-15
Switch the button to jog.

Only one capsule should be dropped in each column. If two capsules are dropped in the same column, the gate needs to be lowered. If no capsules are dropped, the gate needs to be raised.



2 capsules dropped per column (lower the gate)



No capsules dropped (raise the gate)



1 capsule dropped per column (correct)



16. Pull out the gate opening adjuster.



Fig-16

Pull out the gate opening adjuster.

17. Switch the jog button to OFF. Then, rotate the handwheel counterclockwise. After that, fill the magazine with capsules.

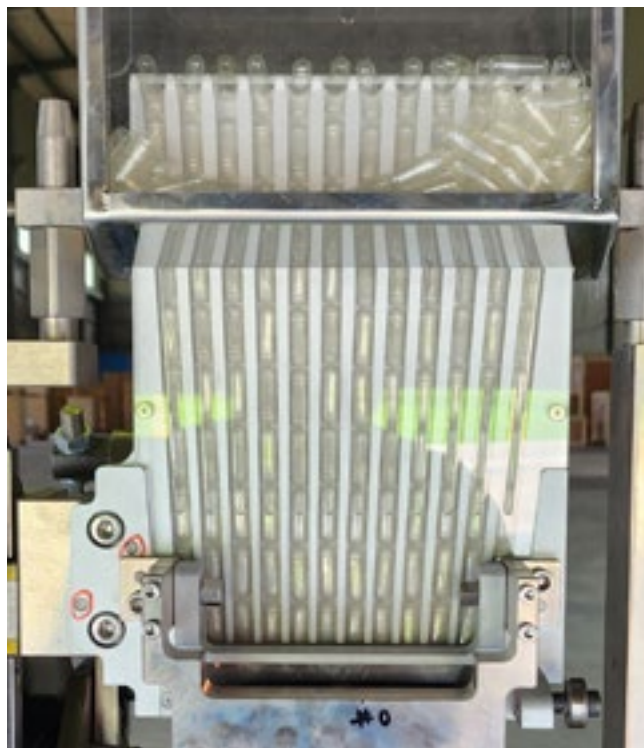


Fig-17
Switch button to off and fill magazine with capsules.

18. Push in the gate opening adjuster.



Fig-18
Push in the gate opening adjuster.

19. Rotate the handwheel clockwise. After that, turn on the power and check if the magazine is correctly inserting the capsules in the tray.

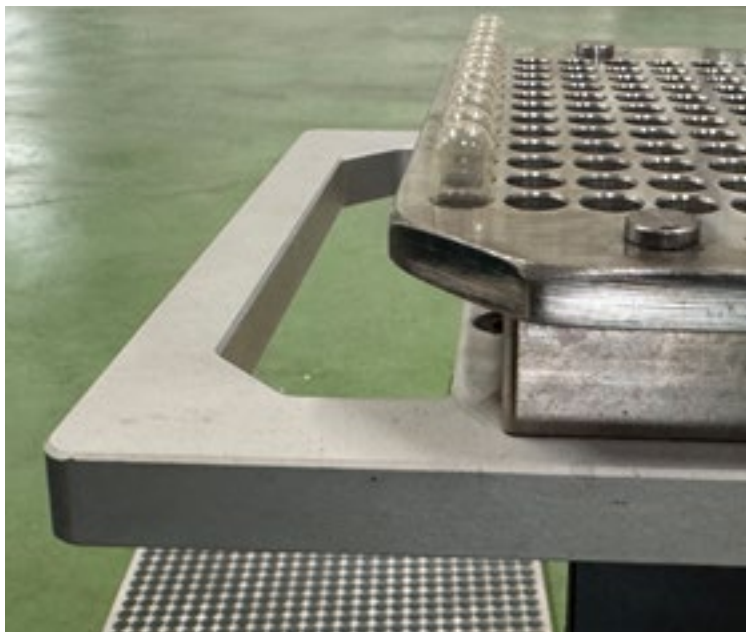


Fig-19

Check to see if the magazine is inserting the capsules correctly.

If the capsules are not being inserted correctly, re-calibrate the gate opening adjuster (see page 12).

Resources

Helpful Links

Warranty

For information regarding the warranty policy of the PACL-300[®] and other LFA products, please visit <https://www.lfacapsulefillers.com/warranty>

LFA Website

In order to aid you in your mixing production, LFA Machines maintains a website that offers a breadth of useful information about the PACL-300[®] and other machines.

Visit the LFA homepage at <https://www.lfacapsulefillers.com>

LFA Machines YouTube Channel

Our YouTube videos provide you an opportunity to see how to use our machines, common troubleshooting tips, and other LFA products such as tablet presses and mixers. We regularly upload videos to give you a visual aid that will hopefully support you in your production efforts. To watch our videos, please visit <https://www.youtube.com/channel/UCwtbcwja77ai7vX2o34FUkQ>

Contact Us

UK

LFA Machines Oxford Ltd
Unit 4B Rowood Estate
Murdock Road
Bicester, Oxfordshire OX26 4PP
+44 01869 250234
support.uk@lfamachines.com
Monday-Friday
9AM-5PM GMT

Germany

LFA Machines Düsseldorf GmbH
Business Parc Am Trippelsberg 92
Düsseldorf, North-Rhine
Westphalia 40589
+41 21188250223
verkauf@lfamachines.com

USA

LFA Machines DFW, LLC
6601 Will Rogers Blvd
Fort Worth, TX 76140
+1 (682) 312 0034
support.usa@lfamachines.com
Monday-Friday
8AM-6PM UTC (Central)

Taiwan

LFA Machines Taiwan Ltd
7F-5, No. 2, Sec. 2 Taiwan Blvd
West District, Taichung City 403
Taiwan
+886 422031790
support.asia@lfamachines.com
Monday-Friday
9AM-5PM GMT+8

LFA Machines Social Media

Social media is a great way to keep yourself updated on new developments and exciting things happening at LFA Machines. The list below contains our current social media pages:

Twitter: @lfatabletpress

Instagram: @lfatabletpresses

Facebook: <https://www.facebook.com/lfatabletpresses>

LinkedIn: <https://www.linkedin.com/company/lfa-machines-oxford-ltd/>



LFA MACHINES

Copyright © 2024 by LFA Machines

www.lfamachines.com

United Kingdom

Unit 4B
Murdock Road
Bicester
Oxfordshire
United Kingdom
OX26 4PP

United States

6601 Will Rogers Blvd
Fort Worth
Texas
United States
76140

Germany

Business Parc Am
Trippelsberg 92
Düsseldorf
Germany
40589

Taiwan

7F.-5, No. 2, Sec. 2
Taiwan Blvd., West Dist.,
Taichung City 403,
Taiwan